

SH.V

SURRY HILLS

VILLAGE

SH.V
SURRY HILLS
VILLAGE

 TOGA



THE NEW SURRY HILLS VILLAGE STORY

Welcome to a place where imagination, history and architecture combine to create a whole new story for Surry Hills Village. Whether you live here, visit its stores or sample its café culture, this redesigned village will become the new life and soul of the Sydney's Inner-City.

A NEW INNER CITY STAR



CONTENTS

Surry Hills Village	6
The Curators	18
Surry Hills Village Retail	24
The Apartments	36
The Penthouses	50
The Terraces	64
The TOGA Legacy	70





MEET YOUR LIFESTYLE

It's a place filled with sensory experiences. The most hatted restaurants in one location, a magnet for talent, and surprises at every turn. A hub inside the city, Surry Hills Village has intimate appeal in the midst of the metropolitan buzz.

A FRONT ROW SEAT TO EVERYTHING CHIC



BILL GRANGER - BILLS

A superstar of the Surry Hills scene, Bill Granger's take on classic Sydney fare started a dining revolution.

Sunday mornings are synonymous with a table at Bills. When you live here, it feels like home.



From one seminal café, the Bills empire has gone global. Bills' Sydney spin on scrambled eggs, ricotta hotcakes and corn fritters now comfort diners in multiple locations across London, Japan, Seoul and Hawaii.

The New Yorker headlined owner-chef Granger as "The Man Who Made the Australian Café (and, Yes, Avocado Toast) a Global Phenomenon". They may call Bills a phenomenon, but with the reinvented Bills Surry Hills serving up his delicious fare just down the road, you'll call it your local.



JACQUI CHALLINOR - NOMAD

There's so much to love about Nomad where head chef Jacquie Challinor's beautiful food has won the warehouse-like restaurant three consecutive chef hats.



BEN WILLIAMSON, MIKE DIERLENGER
AND IBBY MOUBADDER - NOUR

It's one of Sydney's most interesting places to brunch. It's also one of the prettiest, especially in daylight hours. Stroll into the elegant pastel-hued space with its tiles and rose-pink tubular chairs and the tangy scent of pomegranate and olive trees fills the air. It's places like this that make living in Surry Hills Village so appealing.

Refashioning cuisine in Sydney's most fashionable suburb, Nour is Middle Eastern without being middle-of-the-road bringing something new and different to the city's Lebanese traditions.



BILLS, CROWN ST



FIREDOOR, MARY ST



BARTOLO, CROWN ST



PARAMOUNT RECREATION CLUB,
COMMONWEALTH ST

CURATORS

Visionary design - from a handpicked team of Sydney's finest creative minds who love, live and work in this greatest of urban villages. Their passion for the neighbourhood has produced some of their best work yet.

CREATING BEAUTIFUL PLACES



ALLAN VIDOR - MANAGING DIRECTOR - TOGA GROUP

For more than 55 years, TOGA has created places that make a positive and lasting impact on people and communities. Because everyone deserves to be in a place they love.

"On this extraordinary site, we're creating something visionary for Surry Hills. Not just an apartment project, but a seamless connection of residential, retail and commercial spaces where people can socialise and engage.

"We're retaining and restoring the original heritage elements and reflecting the neighbourhood streetscapes. We're making room for what matters - green spaces, social engagement, heritage preservation and magnificent design. Above all,

we're making meaningful spaces, designed and built around the needs of people and communities.

"Importantly, TOGA's capabilities mean we guide every aspect of our projects, from concept to design, build and beyond. It's this peace of mind that allows our customers to continue to choose and recommend us.

"You'll see it in the way we shape the village retail and dining spaces, curating high calibre businesses to enrich community experiences.

"You'll see it in our ongoing ownership and management of retail and our obsession with design details. We plan to be part of this community long term.

"I've never seen a project that our team is so excited about and personally invested in. We put everything we've got into delivering true quality and enduring value for the entire community. We're sure you'll love it as much as we do."



ADAM HADDOW - ARCHITECT AND PRINCIPAL - SJB

Acclaimed design leader Adam Haddow's artful and beautiful architecture captures the imagination.

"How do you get the essence of Surry Hills into a new building? How do you translate the most interesting aspects of the village – its nooks, crannies and backstreets – into the design? These were the questions we obsessed about in creating the new Surry Hills Village.

Haddow, a long-time local, used his globally acclaimed Cleveland & Co apartment as a kind of template for his creation here. "The open living

and garden courtyards, the framing of the views, privacy without fences ... all these features draw on my investigations in creating my own home."

"We wanted passersby to feel like it's been here forever. For every corner to reveal new surprises. To shape a place that speaks to the history and spirit of Surry Hills Village in a contemporary way.

"A new laneway culture knits back into the suburb's pedestrian fabric. Greenery is a major feature with multiple outdoor spaces, a new public park and shared and private gardens instilling a unique green feel into the project.

"It's not only about how it looks, it's about how it feels. For me personally, it's wonderful to give something back to a place I love."



IAIN HALLIDAY - DIRECTOR - BKH

In this Village oasis, celebrated designer Iain Halliday excels at what he does best – creating interiors of breathtaking refinement and elegance.

Iain Halliday has drawn upon his wide experience across an international portfolio of elite homes in realising these special apartments.

"It's all about the strength of the gesture. I love the attention to detail, and the focus on flow and ease. We've put a lot of thought into crafting beautiful rooms with beautiful proportions. Spaces that are sure-footed, elegant and transporting,

and that sit comfortably within an area noted for its culture, visual arts, history and style.

"In the spatial planning, we spent time to create an ordered space, working the rhythms of the rooms. We also worked to create subtle, luxurious layers of texture and colour seen to great effect in the Venetian-style terrazzo, Corian and Marblo surfaces that sculpt and bounce the light.

"TOGA has been meticulous in their oversight, but they've also given us freedom to create and push the standards in design and detailing, which is always the best way to work.

"It's been amazing collaborating with the team and we're really looking forward to bringing our vision to life."



EVA-MARIE PRINEAS - ARCHITECT AND PRINCIPAL - STUDIO PRINEAS

With technical expertise and brilliance in balancing old and new, Eva-Marie Prineas has given a fresh voice to the former Bank of NSW building that anchors the site's landmark corner.

The art of fusing old with new is a constant thread in Eva-Marie's work, with her early experience alongside a leading heritage architect greatly informing her practice today.

"What's interesting about Surry Hills and Redfern is its edges. It touches the city, parkland and Oxford Street, so you get real diversity in the urban grain. That's why placemaking and

authenticity are crucial in creating a truly mixed-use destination, home and neighbourhood like this.

"Retaining and restoring the heritage components has made the project soar. On the exterior, we've enhanced the beautiful history of the building, giving it new life against the rounded brickwork and sandstone elements.

"Architecture is more than just a visual art. It's also a social art. We're deeply invested in the details, but we're also interested in how buildings and places are inhabited and experienced.

People will love the green space, they'll love the connection to the suburb, and they'll love the sense of community we're building here.



SURRY HILLS VILLAGE DINING

AN AUTHENTIC MARKET EXPERIENCE

It's the kind of village everyone would love on their doorstep. A vibrant market-style address that extends a new story to a whole new part of the city.

REIMAGINING RETAIL



Journey through the beautiful European-style retail arcade and there's a sense of intrigue that invites exploration. Seductive archways draw you inside to the new beating heart of a much-loved neighbourhood.

Find remarkable places to eat, browse and linger in the vibrant market-style laneway. Pick up fresh produce on your way home from work at the brand new Coles supermarket, wine for dinner at Vintage Cellars, or dine al fresco under the stunning oculus, open to the sky. Surry Hills Village will hum with the right mix of everything.



SURRY HILLS VILLAGE RETAIL LANEWAY



SURRY HILLS VILLAGE HERITAGE



SURRY HILLS VILLAGE DINING



GREENSPACE

There's real joy in the sheer abundance of green that sees nature playing a starring role across the Village. Balconies and terraces open up to lawns, planting and trees. Walled gardens offer space for quiet contemplation or yoga, courtyards for barbecues and community feasts, and roof gardens for basking in the sun. On the southern border, a 517-square metre public park adds a wonderful grassy edge, perfect for those with pets.



SURRY HILLS VILLAGE BAPTIST STREET



ARTISAN APARTMENTS

The allure of apartment living in Sydney's most elegant new address. Beautifully crafted. Artfully designed. A private world of sophistication and comfort, just a heartbeat away from the village buzz.

A GLAMOROUS RETREAT



GARDEN APARTMENT - BOHEMIAN

Live beautifully in an apartment drawn from the imaginative eye of legendary designer, Iain Halliday. Layering sheer sweeps of muted colour with free-flowing indoor-outdoor space and profuse natural light, it's the special touches that set these homes apart.



GARDEN APARTMENT - SHOWGIRL

Massive landscaped terraces on the raised garden apartments feel as removed from urban life as it's possible to be. Find your own lush and sun-filled private garden, hidden away from the bustling Village below. An ideal pet-friendly abode.



APARTMENT KITCHEN - SHOWGIRL

Thoughtfully ordered spaces display perfect scale and detail from the blush-toned terrazzo to the simple flowing lines.



APARTMENT KITCHEN - BOHEMIAN



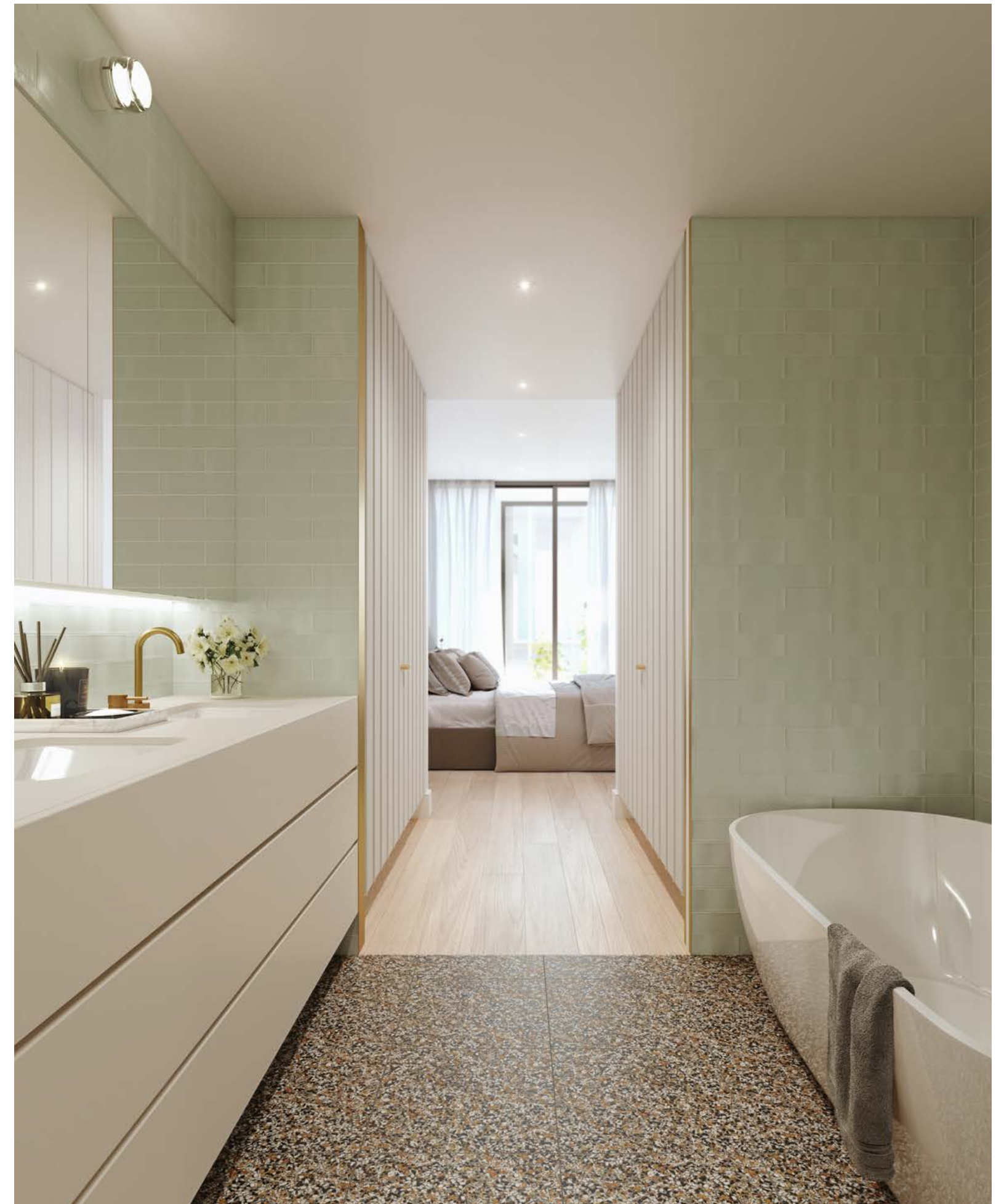
Generosity is a hallmark of these well-appointed signature apartments. Even the one-bedroom homes include inviting oversized outdoor spaces and welcome features such as kitchen islands, normally reserved for larger apartments.

Every aspect of these head-turning apartments is infused with light, beautiful lines and simple elegance. Choose from two village-inspired palettes – Showgirl and Bohemian – each a beautiful canvas upon which you can imprint your own sense of style.

In selected apartments, customers will enjoy large double vanity ensuite bathrooms, as well as large free-standing bath-tubs.



APARTMENT ENSUITE - SHOWGIRL



APARTMENT ENSUITE - BOHEMIAN



LANDMARK PENTHOUSES

They will be the most captivating and glamorous penthouses in Sydney's Inner-City. Designed with rare vision and clarity, they offer space, amenity and upmarket finishes customary only in the finest private homes.

A TROPHY HOME

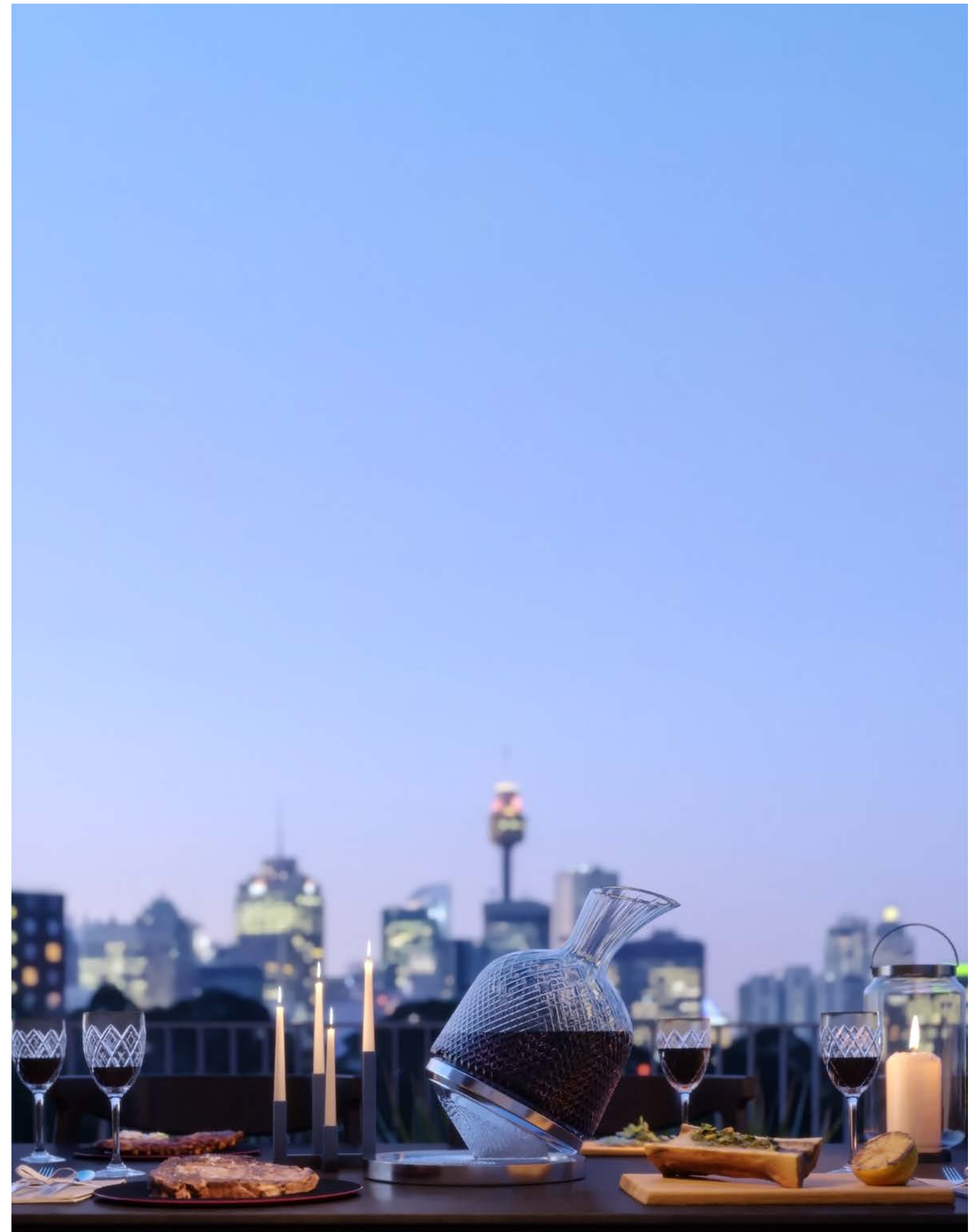


PENTHOUSE - VERDE

From the grand proportions to the smallest details, the designer's confident eye for beauty enthralled. Inspired by architect Adam Haddow's own award-winning residence, the penthouse interiors engage nature, views and open space in a fresh and timeless way. The spaces feel as much outside as in, while exceptional features such as the leather-bound bar, flickering fire, and coveted Sub-Zero Wolf appliances deliver Manhattan-like luxury.

PENTHOUSE VIEW

Entertain magnificently on your penthouse terrace, dining in the open air amongst the stars and icons of Sydney. From here you really feel that you're part of a true Village on the very cusp of an international city.





PENTHOUSE KITCHEN
- ROSSO

Where dinner at home is one of life's simplest pleasures. Generous use of rare and authentic natural materials such as Rosso marble delivers an immediate sense of visual and textural luxury.



PENTHOUSE KITCHEN
- VERDE

Inspiring, refined and so desirable. Atmospheric designer lighting brings out the striking beauty of the dramatic Verde marble, part of a suite of upmarket finishes that add true depth to the spaces.



PENTHOUSE BATHROOM - ROSSO

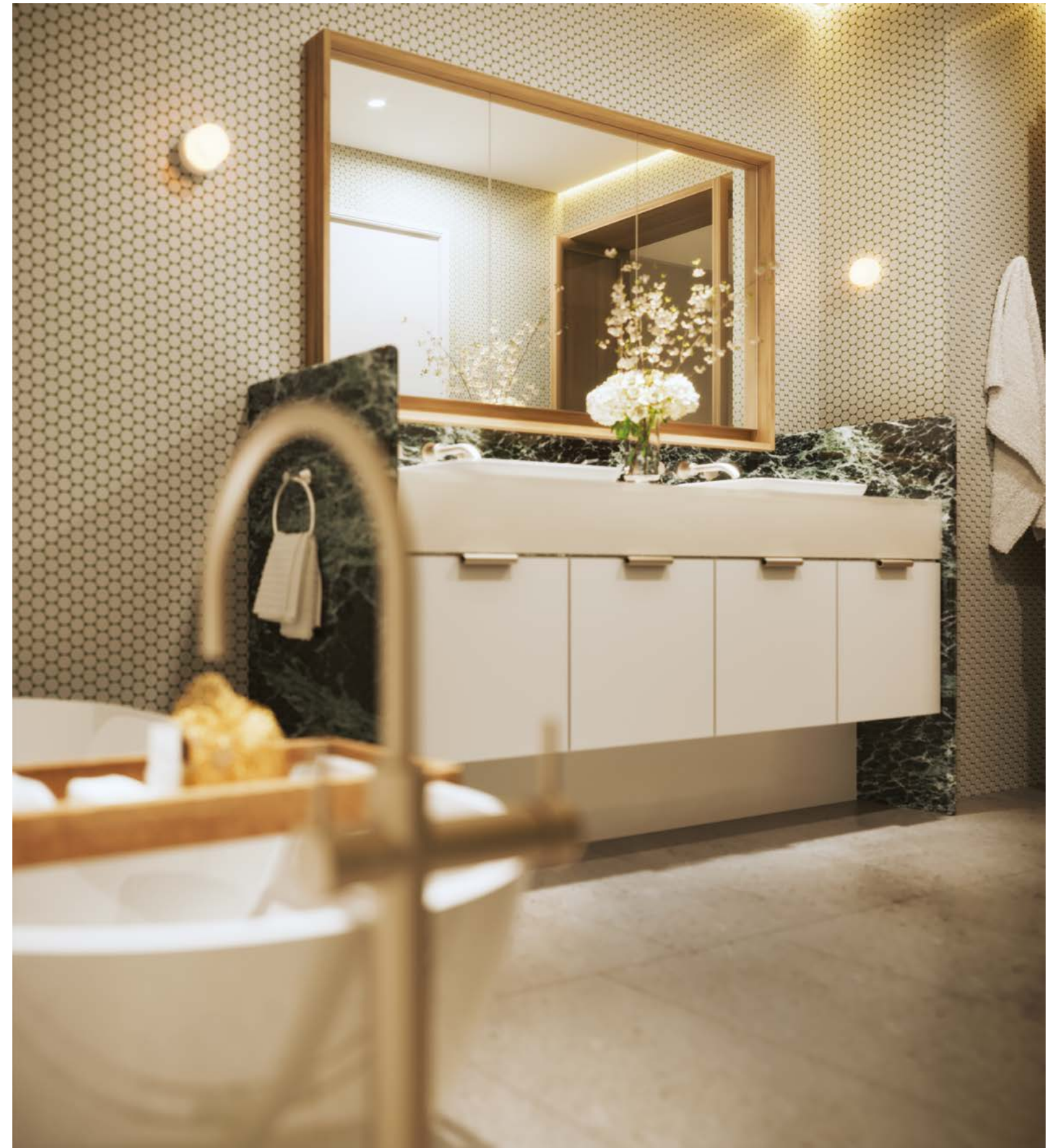


PENTHOUSE BATHROOM - VERDE

Wonderfully tranquil, these warm and detailed spaces are designed to outlast changing fashions. Elegant curves echo the exterior architectural motif while head-turning finishes such as free-standing baths and emerald marble create a luxurious spa-like mood.

PENTHOUSE BATHROOM - VERDE

From the artisan penny round tiles to the timeless brushed nickel accents, every aspect of the glamorous penthouse ensuite is a constant delight. This is your place to refresh and revive and feel the cares of the day dissolve.





THERE ARE ONLY SIX

For those who appreciate the finer things and notice the details others miss. These magnificent limited-edition terraces offer the kind of style and liveability rarely found in the Inner-City today.

A MODERN TAKE ON TRADITION



TERRACE OUTDOOR

Tucked away on a leafy, one-way street or fronting an adjacent pocket park, these tour-de-force three-bedroom terraces are created with even the most discerning of purchasers in mind. Each features penthouse-standard finishes, a private street entry, beautifully landscaped courtyard and – essential in inner Sydney – secure parking.



TERRACE - VERDE

Peaceful, private, indulgent. The cultured terrace interiors evoke both warmth and beauty, hinting at the largesse of yesteryear in an inspired contemporary context. A timeless backdrop where you can easily see yourself and your collections.



HARBOURFRONT, BALMAIN

TOGA's dedication to enriching communities and the lives of residents is embodied in the way we shape retail and dining experiences.



BILLS, BONDI

Surry Hills Village will bring foodie culture to the other end of this iconic suburb. Expect a gourmet produce and dining precinct overflowing with artisan providores, cafés and restaurants. Up early or out late, it will be somewhere fresh and contemporary that perfectly expresses the Surry Hills lifestyle.



HALL ST MARKET, BONDI

As creators of celebrated Bondi Boheme, the new Surry Hills Village is set to take that concept to another level – a model to reinvent true neighbourhood retail with a special charm all of its own.

Our track record speaks volumes. At Bondi Boheme, TOGA curated an exceptional line-up of renowned restaurateurs, cafés and market retailers including Harris Farm, 1888 Certified Butcher, A Tavola, Da Orazio, Gelato Messina, Papa Pasticceria, China Diner and Bills. We plan to do even more here at the new Surry Hills Village.



BOHEME, BONDI BEACH



SURRYHILLSVILLAGE.COM.AU

1800 554 556



ESTABLISHED 1963

1.No person is entitled to rely on any information, representation, projection, advice, opinion or other statement in this brochure. 2. This brochure was prepared before completion of construction of the development and includes indicative information only. 3. The photography and images of the landscape and landscape elements, buildings and home interiors are indicative only. 4. The actual final installed materials and finishes may differ from the indicative materials and finishes shown in any photography or images in this brochure. 5. Changes may be made during the development, with or without notices to purchasers, including changes to materials, dimensions, fittings, finishes and specifications. 6. Toga Pty Ltd and its related bodies corporate (TOGA Group) and their officers, directors, employees, representatives and agents do not represent, warrant or guarantee that any aspect of this brochure is accurate. 7. Prospective purchasers must make and rely on their own enquiries. 8. This brochure is only a guide and does not constitute an offer or agreement. 9. TOGA Group and its officers, directors, employees, representatives and agents do not accept any responsibility or liability whatsoever for any loss, damage or claim whatsoever in connection with any information, representation, projection, advice, opinion or other statement provided, including in or by this brochure, any model, any display suite and any other marketing material.



